

YEAR 2005

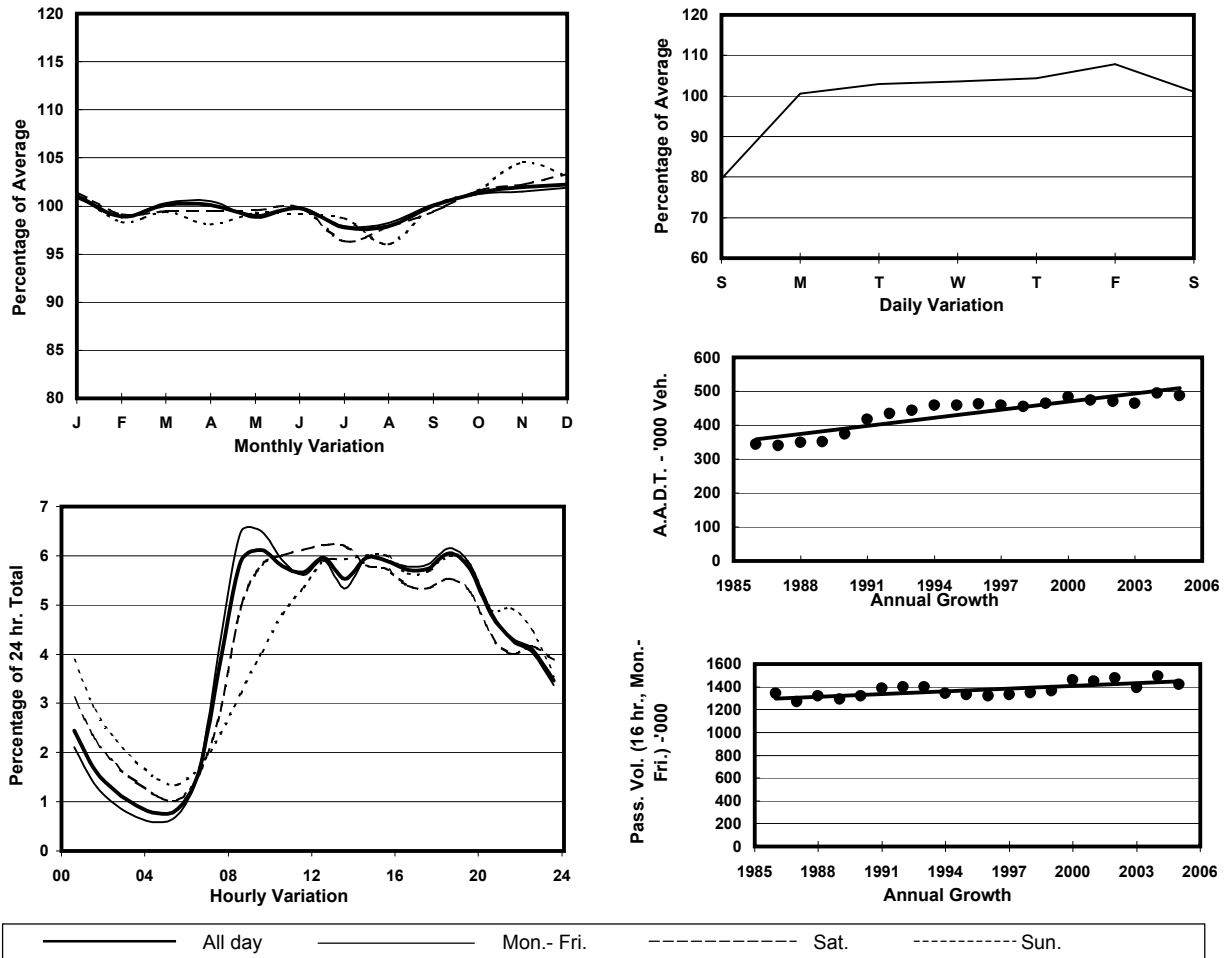
Location

Hong Kong Internal Cordon(Central District)

Stations on Cordon/Screenline

1001, 1007, 2207, 2208, 2209, 2210, 2211, 2212, 2216, 2402, 2403, 2404 and 2405

1. TRAFFIC FLOW VARIATION AND GROWTH



2. TRAFFIC CHARACTERISTICS (BY DIRECTION)

Parameter	All - Day	Mon. - Fri.	Sat.	Sun.
OUT BOUND				
A.A.D.T.	241200	253060	246200	193260
R 12 / 24 - %	67.6	69.1	65.4	60.1
R 16 / 24 - %	86.8	88.4	83.3	80.6
AM Peak Hour	0900-1000	0900-1000	0900-1000	0900-1000
One-way flow at AM peak hour	14320	15930	13940	7590
T - % (AM)	-	10.3	-	-
PM Peak Hour	1800-1900	1800-1900	1800-1900	1800-1900
One-way flow at PM peak hour	14610	15650	13610	11380
T - % (PM)	-	8.9	-	-
Prop.of commercial vehicles - 16 hr.	-	9.2	-	-
IN BOUND				
A.A.D.T.	245500	257360	250590	197680
R 12 / 24 - %	68.7	70.1	66.7	61.8
R 16 / 24 - %	87.4	88.9	84.4	81.6
AM Peak Hour	0900-1000	0800-0900	0900-1000	0900-1000
One-way flow at AM peak hour	15440	17310	14950	8240
T - % (AM)	-	11.9	-	-
PM Peak Hour	1800-1900	1800-1900	1800-1900	1800-1900
One-way flow at PM peak hour	14820	15760	13930	12060
T - % (PM)	-	8.9	-	-
Prop.of commercial vehicles - 16 hr.	-	8.8	-	-

3. OTHER INFORMATION AND COMMENT

Hong Kong Internal Cordon Year 2005

4. Vehicle classification and occupancy - Monday to Friday

Time		Class of vehicle									
		Motor	Private	Taxi	Private	PLB	Goods veh.		Non	Fr. Bus	
		Cycle	Car		LB		Light	M & H	Fr. Bus	SD	DD
0700-0800	Pro	2.7	21.6	43.1	1.9	5.0	10.3	2.2	5.2	0.4	7.5
	Ocp	1.1	1.4	1.9	6.0	9.7	1.5	1.4	12.9	18.7	23.0
0800-0900	Pro	2.7	38.9	35.7	0.9	3.1	6.8	1.2	4.7	0.2	5.7
	Ocp	1.1	1.4	1.8	3.7	11.3	1.7	1.6	18.3	21.2	32.3
0900-1000 Peak Hour	Pro	2.1	33.3	37.1	1.3	2.8	13.4	1.6	2.4	0.3	5.6
	Ocp	1.1	1.4	1.9	2.8	9.1	1.7	1.5	12.3	14.3	19.3
1000-1100	Pro	2.4	32.5	32.8	1.2	2.4	19.8	2.1	1.6	0.3	5.0
	Ocp	1.0	1.4	1.9	2.3	6.9	1.7	1.6	8.8	10.5	15.5
1100-1200	Pro	2.2	32.7	30.8	1.7	2.5	20.9	2.4	1.6	0.3	5.0
	Ocp	1.1	1.5	2.0	2.6	7.0	1.7	1.6	8.3	9.2	16.1
1200-1300	Pro	2.2	33.9	38.1	1.3	1.9	14.7	1.9	1.5	0.3	4.1
	Ocp	1.1	1.5	2.1	3.3	8.3	1.7	1.6	9.5	9.0	16.3
1300-1400	Pro	2.0	32.4	36.6	1.4	2.5	16.8	2.1	1.4	0.3	4.5
	Ocp	1.0	1.5	1.9	3.1	7.3	1.7	1.5	8.0	8.9	15.4
1400-1500	Pro	2.0	33.8	36.1	1.2	2.2	16.9	2.1	1.3	0.2	4.2
	Ocp	1.1	1.6	1.9	2.5	8.5	1.7	1.5	9.2	10.7	18.6
1500-1600	Pro	2.2	33.0	34.4	1.9	2.1	17.7	2.1	2.1	0.3	4.3
	Ocp	1.1	1.6	2.0	3.9	8.4	1.7	1.6	9.5	11.5	18.3
1600-1700	Pro	2.4	36.4	33.0	1.6	2.6	15.5	1.4	1.9	0.3	4.9
	Ocp	1.1	1.5	2.0	2.5	8.0	1.7	1.6	7.0	13.0	19.9
1700-1800	Pro	3.5	34.6	37.9	1.5	2.6	10.7	1.1	2.2	0.3	5.6
	Ocp	1.1	1.6	1.9	2.8	10.5	1.7	1.4	9.5	14.4	24.6
1800-1900	Pro	3.5	42.1	37.2	0.7	2.5	5.2	0.6	3.0	0.3	5.0
	Ocp	1.1	1.5	2.0	3.1	12.7	1.7	1.5	14.8	17.4	31.4
1900-2000	Pro	2.3	40.2	44.1	0.2	2.2	3.1	0.3	2.0	0.3	5.3
	Ocp	1.1	1.5	2.0	2.2	11.4	1.6	1.6	12.2	12.9	23.1
2000-2100	Pro	2.2	32.0	52.8	0.2	2.9	2.6	0.4	1.4	0.3	5.3
	Ocp	1.1	1.6	1.7	1.3	10.7	1.6	1.5	12.7	10.6	17.1
2100-2200	Pro	2.7	30.6	55.6	0.3	2.3	2.1	0.3	0.7	0.3	5.2
	Ocp	1.1	1.6	1.8	2.9	9.6	1.8	1.1	17.7	11.2	16.5
2200-2300	Pro	2.0	31.6	54.6	0.3	2.6	2.1	0.4	0.7	0.2	5.5
	Ocp	1.1	1.7	1.8	2.3	8.9	1.6	1.2	17.1	7.8	14.6
16 hours	Pro	2.4	34.1	39.2	1.1	2.6	11.5	1.4	2.1	0.3	5.1
	Ocp	1.1	1.5	1.9	3.2	9.4	1.7	1.5	12.3	12.9	20.7

Legend

- Pro.** Proportion of vehicles in % (Sum may not add up to 100% due to figure rounding)
- Ocp.** Average occupancy of vehicles
- M & H** Medium and Heavy